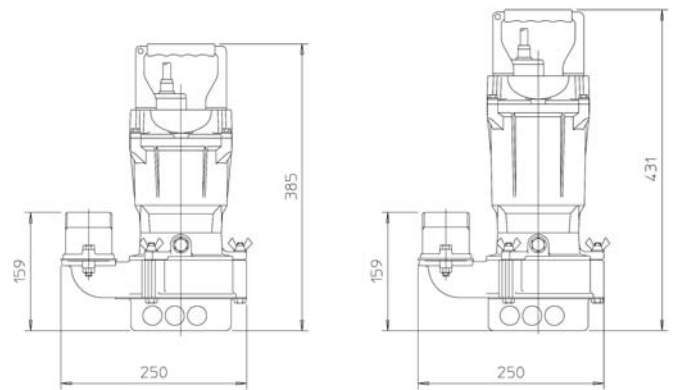


GST05/10 Sub-Prime® Electric Submersible Trash Pumps

The GST Sub-Prime line is a selection of portable, electric submersible pumps designed for trash laden applications. Standard side discharge and semi-vortex cast iron impeller enable these units to handle up to 25mm diameter solids. And the fully removable volute makes clean-out fast and easy. The GST Sub-Prime line offers flow rates to 19.5 m³/hr and maximum heads to 13 metres. Units are available in 0.4 kW (GST05) and 0.75 kW (GST10) models. Need versatility? High performance and affordability combine to make the GST Sub-Prime ideal for use in general dewatering applications as well. An optional starter panel and float switch can be supplied as a cost effective choice for applications requiring automatic operation.



Dimensions (mm)



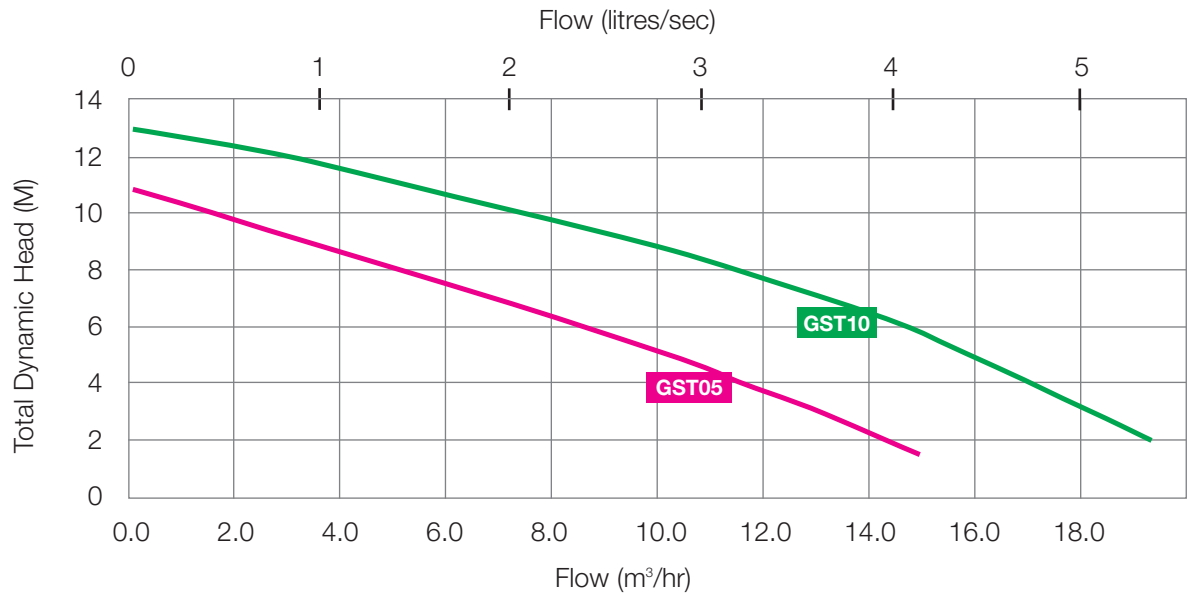
Features

- Solids handling up to 25mm
- Dry running capabilities
- No control panel required
- Portable, lightweight, durable
- Side discharge design
- Non-wicking cable with strain relief
- High-torque, capacitor-start motor
- Motor thermal overload protection
- Silicon Carbide mechanical seal
- Triple seals - internal upper and lower mechanical seals and external lip seal
- Semi-vortex cast iron impeller
- Cast-iron volute, fully removable for easy clean-out
- Maximum submergence 5 metres

Specifications

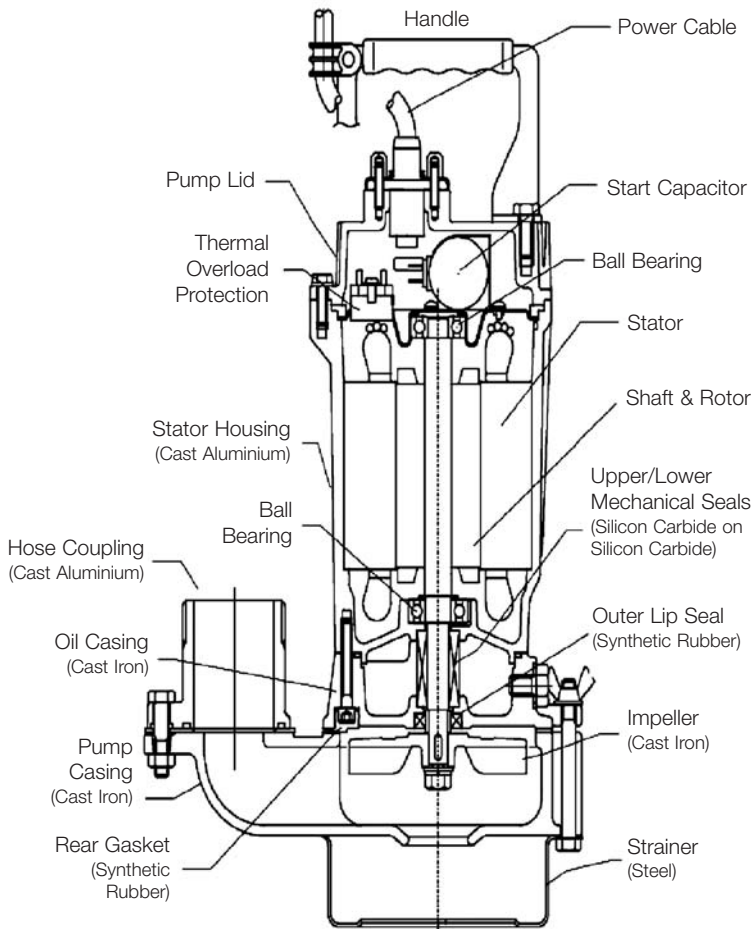
(Model)	GST05	GST10
Motor Power (kW)	0.4	0.75
Max. Flow (M ³ /hr)	15.0	19.5
Max. Head (M)	11.0	13.0
Max solids (mm)	25	25
Cable length (M)	10	15
Discharge Connection	2" BSP	2" BSP
RPM	2900	2900
Max. Fluid Temp (°C)	32	32
PH range	6.5-8.0	6.5-8.0
Voltage	110,230	110,230
Amps	6.0,2.9	10.0,5.6
Phase	1	1
Height (mm)	373	416
Width (mm)	250	250
Weight (kg)	10	13

GST05/10 Sub-Prime® Performance Curves



Warning: Pumps are not designed for use in explosive atmosphere, flammable environments or for pumping volatile liquids

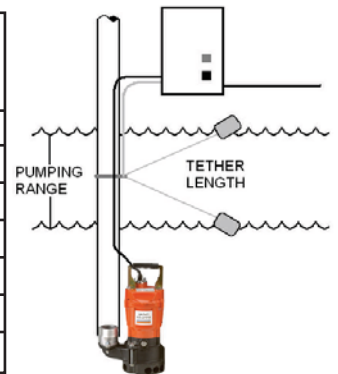
Design & Construction



Float Switch

Optional Float switches available for automatic, remote activation of Sub-Prime pumps. Package consists of 10m/15m power cord with starter panel, variable length float tether, and sealed float. Typical configuration shown in the following.

Tether Length (mm)	Pumping Range (mm)
89	165
127	191
178	216
229	254
279	279
330	318
381	343



Pumping range based on operation in nonturbulent conditions. Actual range may vary due to temperature conditions and cord shape. Tether length increases variance of pumping range.

Specification and illustrations subject to revision without notice. All information is approximate and for general guidance. Sub-Prime and the colour orange for pumps are registered trademarks of Godwin Pumps of America, Inc.

GST05/10-1 03/06



Assessed to ISO 9001:2000
Certificate No. 224

Godwin Pumps Limited
Quenington, Cirencester, Gloucestershire GL7 5BX, England
Tel: 01285 750271 Fax: 01285 750352

Email: sales@godwinpumps.co.uk
Website: www.godwinpumps.co.uk

