

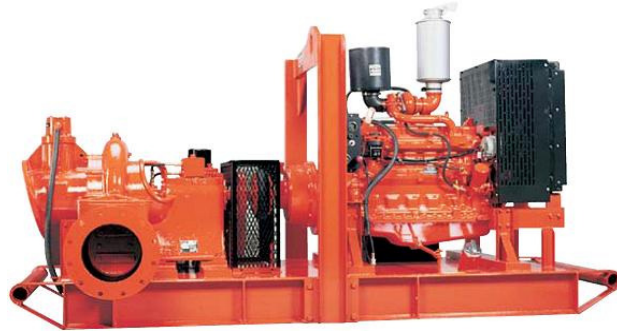
# DPC300 Dri-Prime Pump

DPC300

The Godwin Dri-Prime DPC300 pump offers flow rates to 5,062 USGPM and discharge heads to 110' (34m). Also it has the capability of handling solids up to 4" (95mm) in diameter.

The DPC300 is able to prime to 28' (8.5 m) of suction lift from dry.

Indefinite dry-running is no problem due to the unique Godwin oil bath mechanical seal design. Solids handling, dry-running and portability make the DPC300 the perfect choice for small dewatering and bypass applications. The standard model is mounted on a highway trailer, with a skid-mounted option.



## Features

- Simple maintenance normally limited to checking fluid levels.
- Close-coupled centrifugal pump with vacuum priming compressor mounted to a diesel engine. Also available in electric drive or as bare shaft pumpend.
- Extensive application flexibility. It will handle sewage, slurries and liquids with solids up to 4" in diameter.
- Continuously operated Godwin venturi air ejector priming device requiring no form of periodic adjustment or control.
- Dry-running heavy duty mechanical seal with abrasion-resistant interfaces.
- Also available in a Critically Silenced unit which drastically reduce noise levels of the pump.
- Standard engine John Deere 6068HF285. Also available with Caterpillar C6.6E.
- The volute & suction cover are made from cast iron bs1452:1990 grade 220 and the impeller is made from cast steel bs3100 1976grbw 4 hardness to 200 hb brinell.

## Specifications

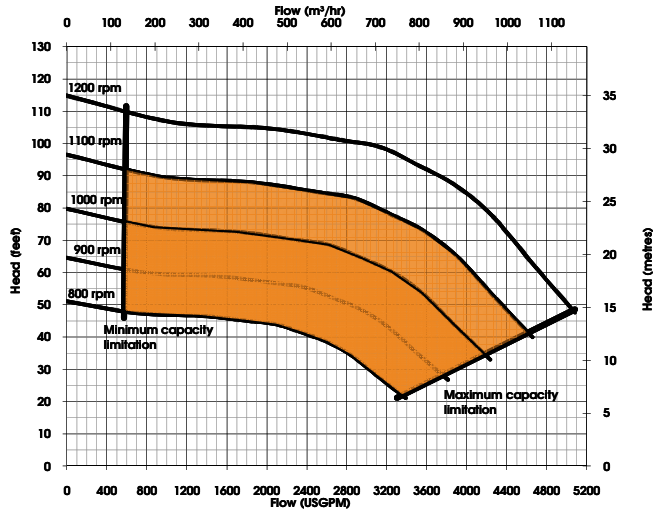
Suction connection	12" 125# ANSI B16.1
Delivery connection	12" 125# ANSI B16.1
Max capacity	5062 USGPM
Max head	110' (34m)
Max solids handling	4" (95mm)
Max impeller diameter	17" (430mm)
Max operating temp	176°F (80°C)
Max working pressure	50.8 psi (3.5 bar)
Max suction pressure	29.0 psi (2.0 bar)
Max casing pressure	59.5 psi (4.1 bar)
Max operating speed	1200 rpm

godwin   
a xylem brand

Reference number : 95-1017-3000  
Date of issue : August 25, 2011  
Issue : 1

Please contact Godwin for further details.  
A typical picture of the pump is shown.  
All information is approximate and for general guidance only.

## Performance Curve



## Materials

Pump casing & suction cover	Cast iron BS1452:1990 grade 220
Wearplates	Cast iron to BS1452 grade 220
Pump shaft	Carbon steel BS970-3:1991 080M40
Impeller	Cast steel BS3100 1976GRBW 4 hardness to 200 HB Brinell
Non-return valve body	Cast iron
Mechanical seal faces	Silicon carbide vs silicon carbide

### Engine option 1

John Deere, 6068HF285, 155.4 HP @ 2200 rpm

Impeller diameter 17 " (430 mm)

Pump Speed 1100 rpm

#### Suction Lift Table

Total Suction Head (')	Total Delivery Head (')				
	24	36	47	59	70
	Output (USGPM)				
<b>9.8</b>	4606	4321	4012	3609	2849
<b>15.1</b>	4511	4178	3799	3229	950
<b>20.0</b>	4036	3561	2849	1899	712
<b>24.9</b>	2137	1899	1424	950	-

Fuel capacity (Full) 150 US Gal, (Usable) 150 US Gal

Fuel consumption @ 2200 rpm BEP 6.8 US Gal/hr

Weight: (Dry) 5,128 lbs, (Wet) 6,352 lbs

Dimensions: (L) 145" x (W) 53" x (H) 71"

### Engine option 2

Caterpillar, C6.6E, 142.1 HP @ 2000 rpm

Impeller diameter 17 " (430 mm)

Pump Speed 1000 rpm

#### Suction Lift Table

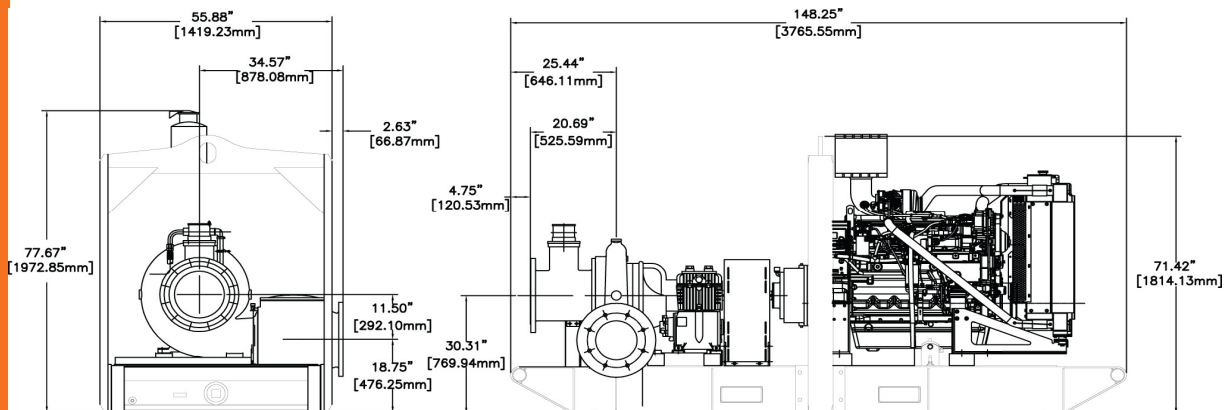
Total Suction Head (')	Total Delivery Head (')				
	9	19	28	38	47
	Output (USGPM)				
<b>9.8</b>	4187	3928	3647	3281	2590
<b>15.1</b>	4101	3799	3453	2935	863
<b>20.0</b>	3669	3237	2590	1727	647
<b>24.9</b>	1942	1727	1295	863	-

Fuel capacity (Full) 150 US Gal, (Usable) 150 US Gal

Fuel consumption @ 2000 rpm BEP 5.6 US Gal/hr

Weight: (Dry) 4,903 lbs, (Wet) 6,112 lbs

Dimensions: (L) 145" x (W) 53" x (H) 71"



Performance data provided in tables is based on water tests at sea level and 68°F ambient.

All information is approximate and for general guidance only.

Please contact Godwin Pumps for further details.

Reference number : 95-1017-3000

Date of issue : August 25, 2011

Issue : 1



84 Floodgate Road | Bridgeport, NJ 08014 USA  
 P: (856) 467-3636 | F: (856) 467-4841  
 Sales@godwinpumps.com | godwinpumps.com